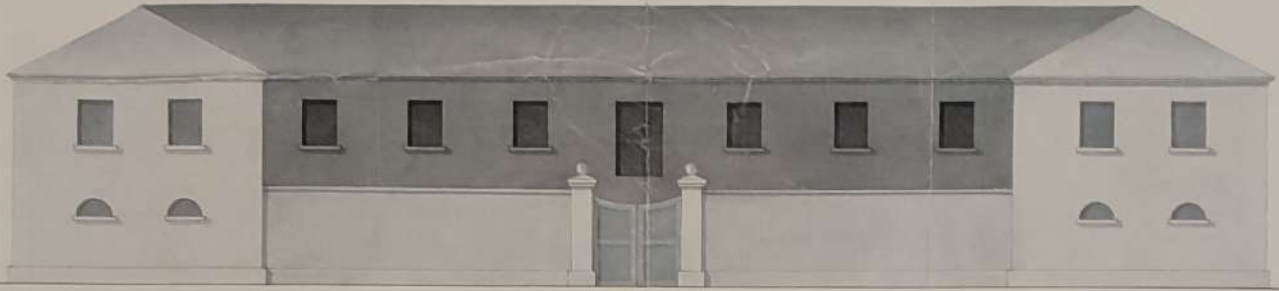


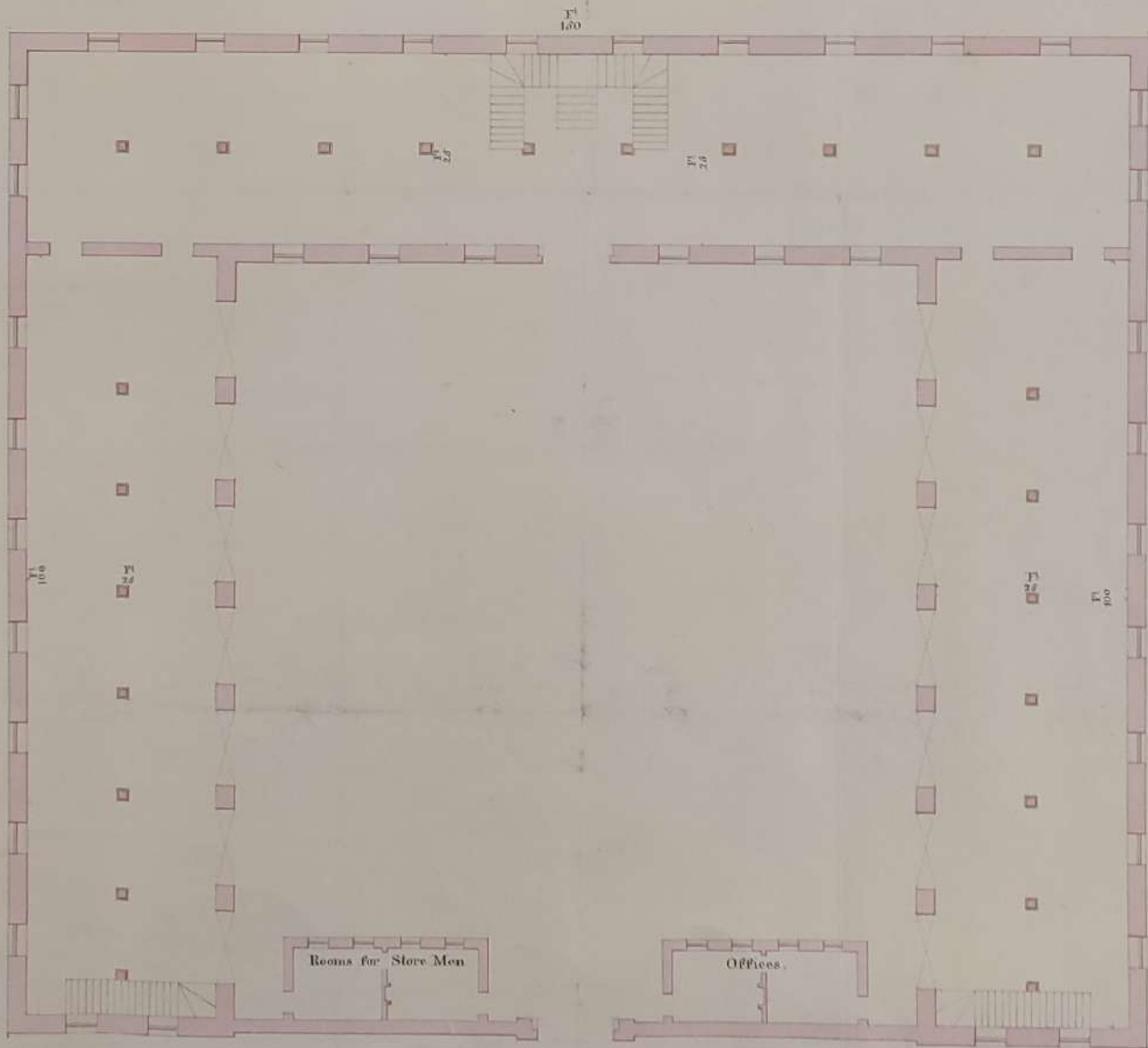
# GIBRALTAR

Proposed STORE ROOMS for the Commissariat 1822.

0 10 20 30 40 Feet

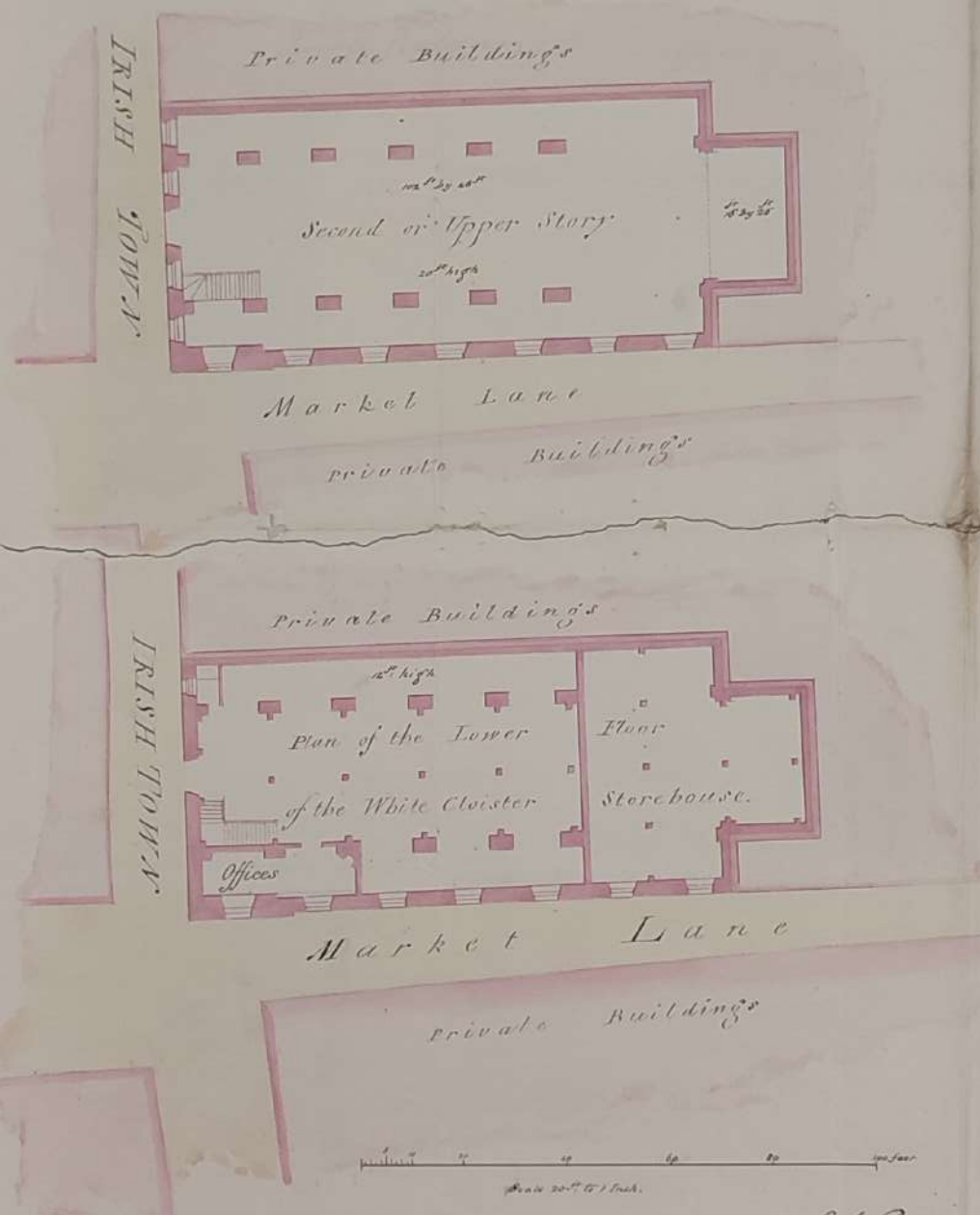


*Wm. P. Kingston  
Arch. & Eng.  
27 Feb. 1822*



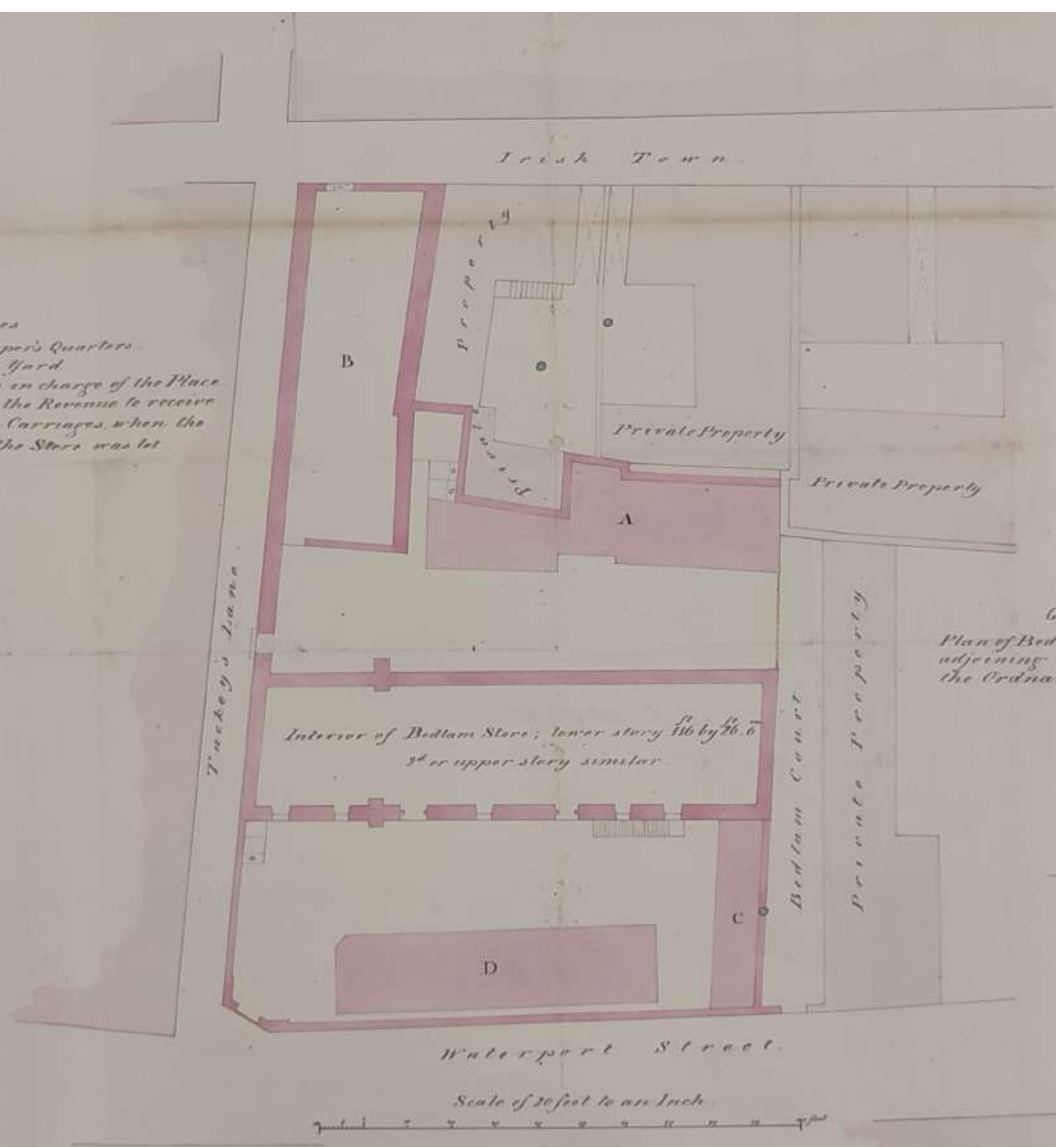
White Cloister Store  
in Gibraltar

Reduce to size of  
foolscap



Robt. Pilkington  
 W. R. King  
 Gibraltar 5<sup>th</sup> June 1823

- References*
- A Deputy Storekeeper's Quarters.
  - B Ordnance Coal Yard.
  - C Shed for a Man in charge of the Place.
  - D Shed erected by the Revenue to receive some of the Gun Carriages when the lower Floor of the Store was let.



*General*  
 Plan of Bedlam Storehouse and adjoining Premises belonging to the Ordnance

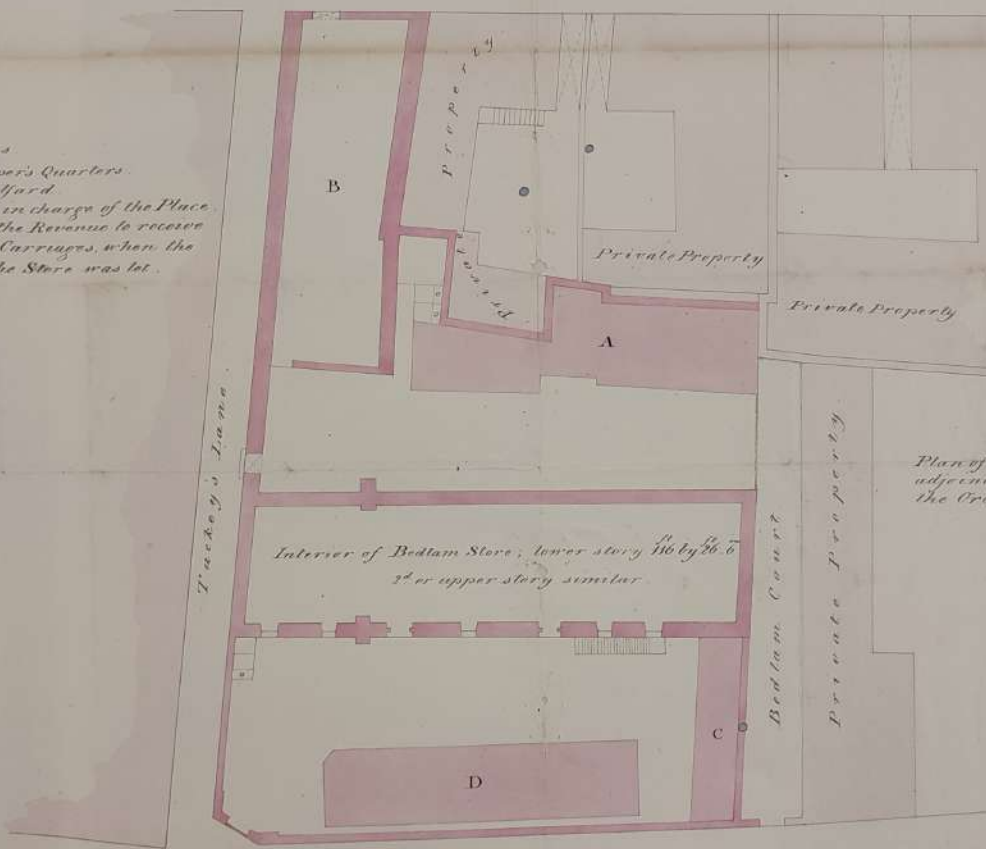
*Wm. Pilkington*  
*Capt. R. King*  
 10 June 1823



*Reduce to paper*

Irish Town

- References
- A Deputy Storekeeper's Quarters.
  - B Ordnance Coal Yard.
  - C Shed for a Man in charge of the Place.
  - D Shed erected by the Revenue to receive some of the Gun Carriages, when the lower Floor of the Store was let.



Gibraltar  
 Plan of Bedlam Storehouse and adjoining Premises belonging to the Ordnance

Adm. Pilkington  
 Lt. Col. R. King  
 10<sup>th</sup> June 1823



Waterport Street

Scale of 20 feet to an Inch

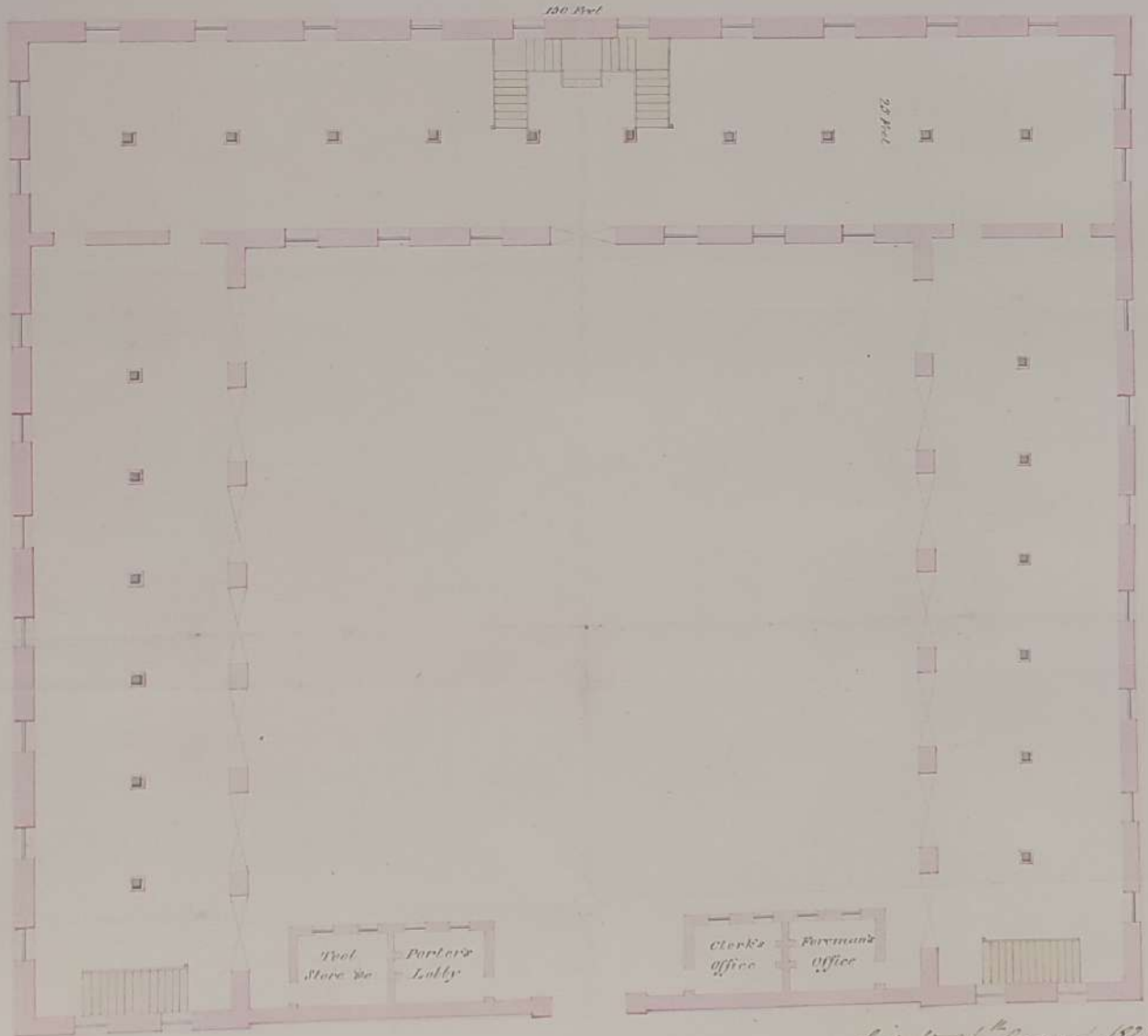
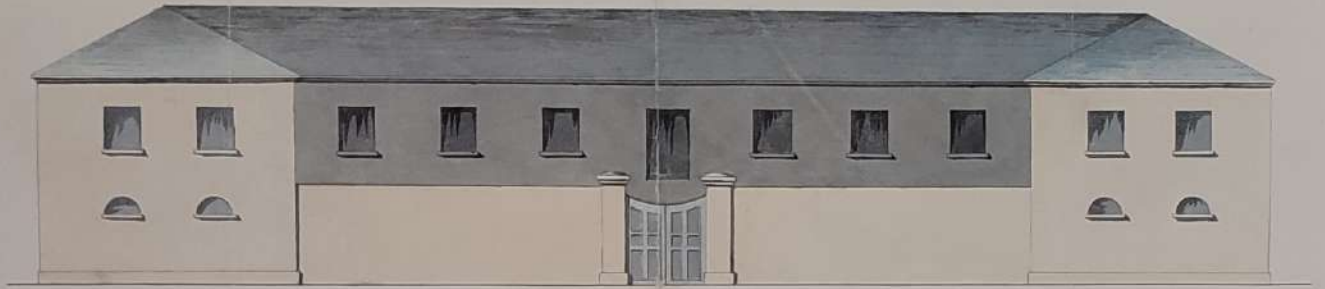
GENERAL TARRANT.

DESIGN for a STOREHOUSE

to be built in the Rear of

THE NEW MOLE PARADE

for Reserve Stores.

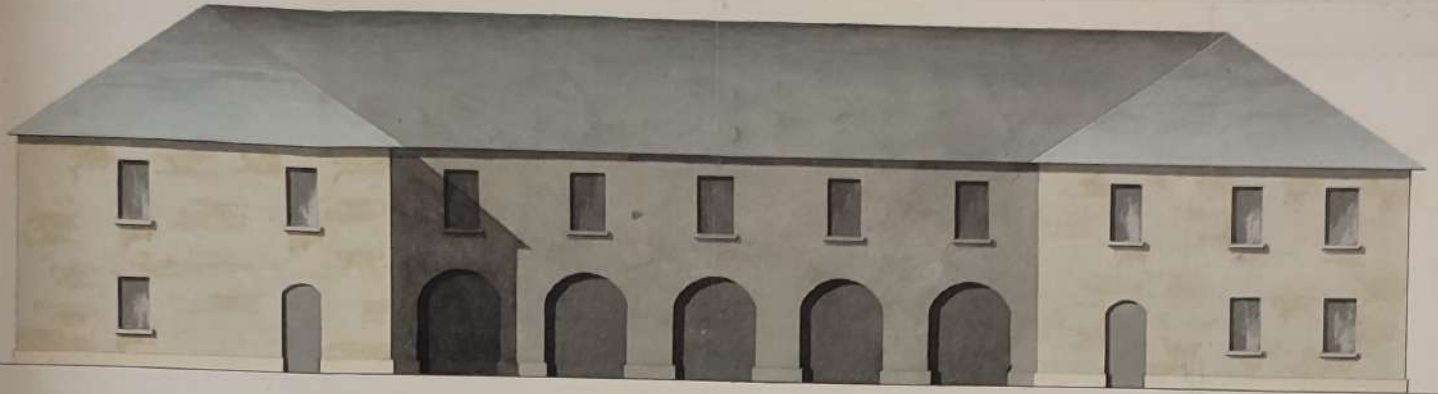


With Letter to Lord Howe  
dated 4<sup>th</sup> Aug. 1823. — and  
an Estimate amounting to £7657.4s.

Scale of 10 Feet to 1 Inch

General Tarrant 4<sup>th</sup> August 1823

J. P. Kingston  
G. R. King & Co



Pitney to be removed

It is proposed that this Wall should have Large

Arched openings made in it on the Upper Floor

GIBRALTAR

PLAN of the NORTH QUADRANGLE

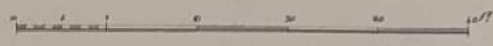
of the

GRAND STOREHOUSES

With an Elevation of the Interior shewing, on the Plan, a proposed Addition stained Yellow.

*Rob<sup>ts</sup> Pilkington  
W. C. Hughes  
25<sup>th</sup> Sept. 1823*

Scale 10 Feet to an Inch.



Storekeeper's

Office

Clerk's

Office

26