

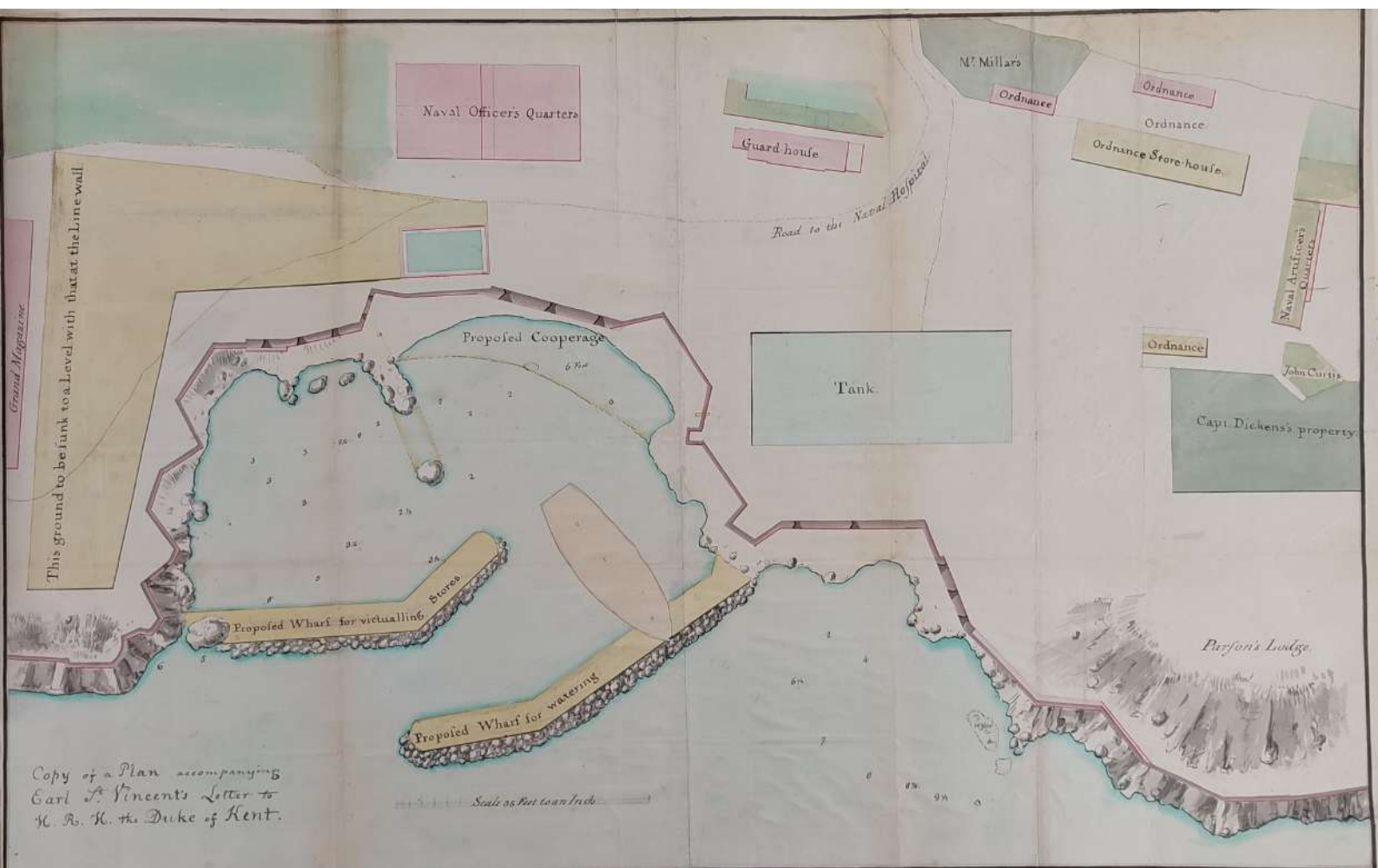
PLAN
of the
Naval Cooperage
and Part of
the new Fortifications

distinguishing in *yellow* what
must necessarily be purchased
by the *Ordnance*, and, by a
deep red, what may be disposed
of to a *private purchaser*.

Gibraltar, 21st Jan^y 1799.

Scale, 50 Feet to an Inch.





Grand Magazine
This ground to be sunk to a Level with that at the Linewall

Naval Officers Quarters

Guard house

M^r Millars

Ordnance

Ordnance

Ordnance

Ordnance Store-house

Naval Artificers Quarters

Ordnance

John Curtis

Capt. Dickens's property

Road to the Naval Hospital

Tank

Proposed Cooperage

Proposed Wharf for victualling

Proposed Wharf for watering

Parson's Lodge

Copy of a Plan accompanying
Earl St Vincent's Letter to
H. B. K. the Duke of Kent.

Scale as per to an Inch

N^o 2.

PLAN of ROSLA BAY, with His Majesty's Naval Victualling Store, &c.
Part of which is to be built over the Tank.

- | | |
|--|-------------------------------------|
| A. Store Houle | G. Cooperage Shop. |
| B. Yard in the center | H. Clerk's quarters. |
| C. Office, and Master Coopers quarters | I. Naval Artificer's quarters. |
| D. Shed for flaves, or Provisions | K. Ordnance Store-houles, and Yard. |
| E. Pickle-boiler. | L. Guard houle |
| F. Salt Store. | M. Propofed Coal Yard. |
| | N. Propofed Wharf. |

References

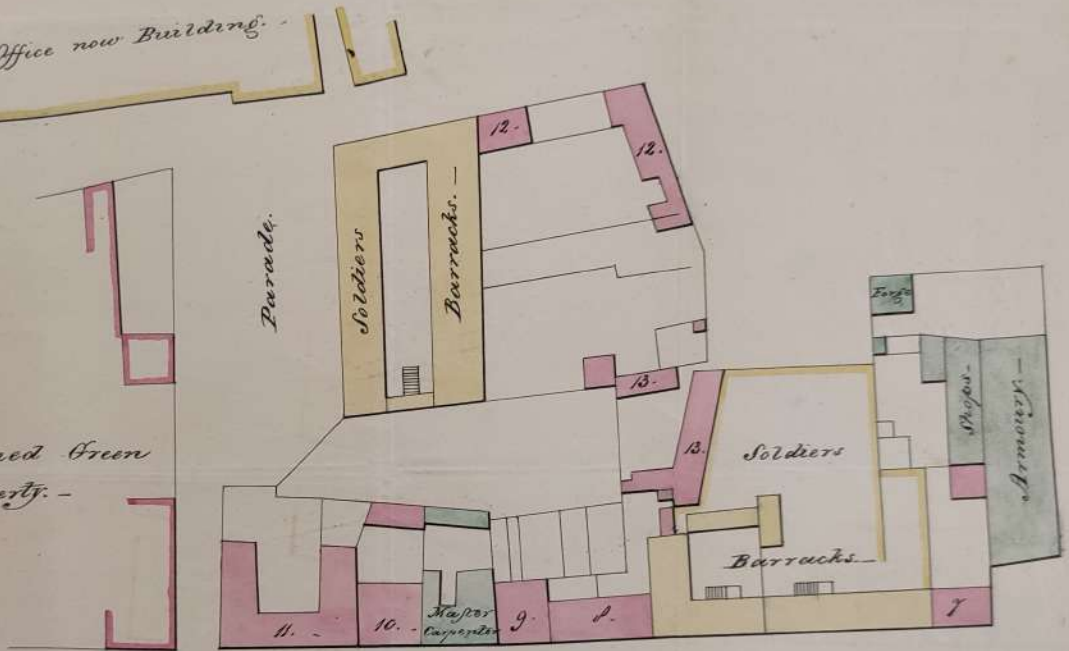
Scale 35 Feet to an Inch



Victualing Office now Building.

Reference.

- 7. - W^m Kitchen.
- 8. - John Ward.
- 9. - Jos. Martine
- 10. - Blas Rose
- 11. - Bodle.
- 12. - Boyd
- 13. - John Ward. -
- 14. The parts stained Green
Ordnance Property. -



A True Copy from the Original Survey of the Town, in 1736
in the Engineers Office.

Aus^d H. Chamberlaine,

R^t Military Draftsman. -

May 24th 1815. -

Plan of Part of Gibraltar in the Year,
1753. -

Scale 50 Feet to 1 Inch. -



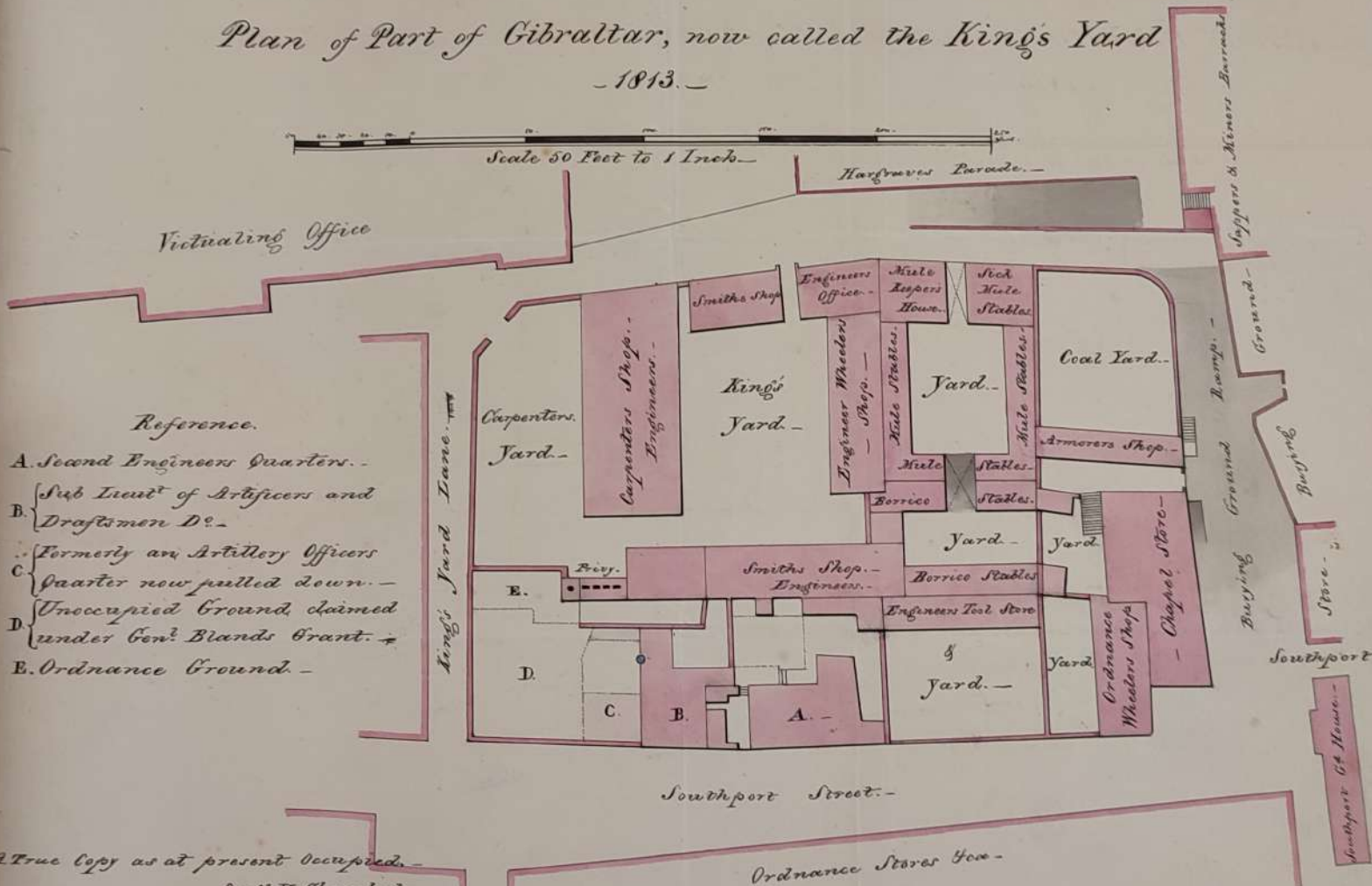
18. The parts stained Green
Ordnance Property. -
The parts stained Black -
Inhabitants Property. -

A True Copy from the Original Survey of the Town in 1753. Barrack.

in the Engineers Office -
Aug^s H Chamberlaine
R^t Military Draftsman.
May 24th 1813. -

Plan of Part of Gibraltar, now called the King's Yard
- 1813. -

Scale 50 Feet to 1 Inch -



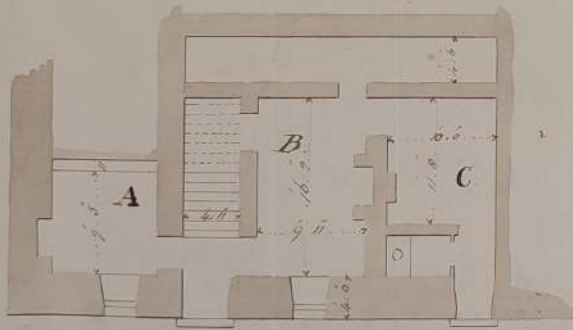
Reference.

- A. Second Engineers Quarters. -
- B. Sub Lieut of Artificers and Draftsmen D^e. -
- C. Formerly an Artillery Officers Quarters now pulled down. -
- D. Unoccupied Ground claimed under Genl Blands Grant. -
- E. Ordnance Ground. -

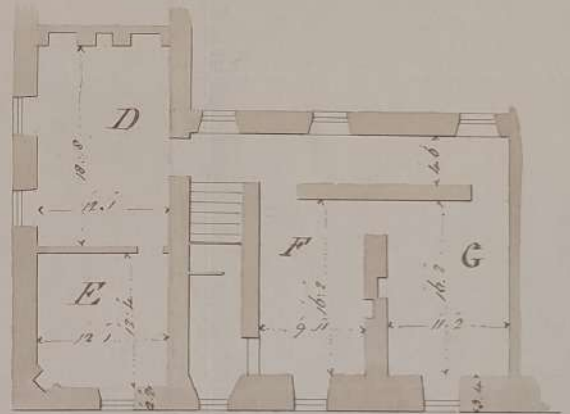
A True Copy as at present Occupied.
 Aug^t H. Chamberlaine
 R^e Military Draftsman
 May 26^t 1813

A Plan of the Established Clerks Quarters at Subaltern

- A* - a small Kitchen for the 1st and 2nd Established Clerks
- B* - a Kitchen for the 3rd and 4th ditto ditto
- C* - a small dark Room behind the Parry
- D* - The only Room for the accommodation of the 1st Clerk and his Family
- E* - The small inner Room for the 2nd - ditto the only Passage to which is through the 1st Clerks Room
- F* - The 3rd Clerks Room
- G* - The 4th ditto ditto



Basement Story



Upper Story

Scale 1/8 inch to a foot